

## PRODUCT INFORMATION

# 3D scanner: 3DSL-ScanProHD

Product name: 3DSL-ScanProHD



Good for damage assessment of

- Pressure vessels
- Storage tanks
- Piping
- Steel bridges
- Concrete surface
- And more objects

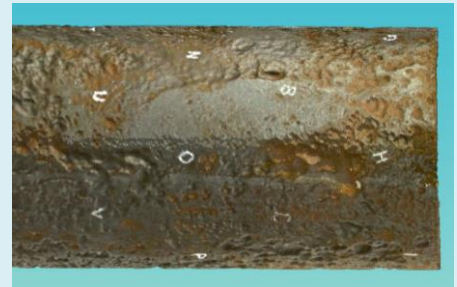


### Use scene

Hold the scanner about 500mm away and start pattern projection. Move slowly to get wide area scanning.

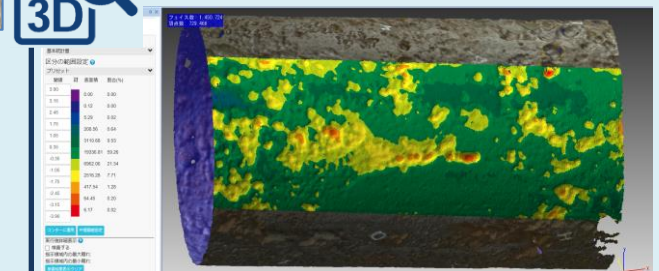


3D



3D data with color texture

3D ?



SEIKOWAVE K.K., Tokyo, Japan

<https://seikowave.jp>

# Product Detail

## 3D scanner: 3DSL-ScanProHD

### Product name: 3DSL-ScanProHD

#### 【Features】

- Structured Light Pattern Projection (white light by embedded LED)
- Slow manual movement to measure a wide area easily without markers
- Full-color texture image on 3D data
- Easily measure the entire circumference of an object (※1)
- Selectable scanning resolution by user per scanning
- Multiple edit functions and filtering functions
- Analysis software line up:
  - ・POLYGONALmeister® (Corrosion depth analysis) (bundled software in the kit)
  - ・uni-Fitness® (API-579 / ASME FFS-1 compliant evaluation software) (optional software)

Specification of scanning mode (selectable in the scanning software)

Items	HD Scan Mode	Rapid Scan Mode (Recommended mode)	Fixed Scan Mode (Turntable mode)
Mesh length	0.2mm ~ 3mm	0.2mm ~ 3mm	0.24mm
Deviation (by scanner)	±0.045mm	±0.1mm	±0.04mm
Deviation (after analysis)	±0.1mm	±0.1mm ~ ±0.2mm	±0.1mm
Working distance	About 510mm	About 510mm	About 510mm
Scan depth (Depth of field)	100mm	100mm	100mm
One-shot scanning area	209mm x 160mm ~ 310mm x 240mm	209mm x 160mm ~ 310mm x 240mm	209mm x 160mm ~ 310mm x 240mm

Dimension of the scanner body: 250mm [H] x 155mm [L] x 50mm [D]

Weight of the scanner body (cable included): 1,250g

※1 Optional turn table is required.

※2 Environmental working conditions:

- Working ambient temperature range: 5 degC ~ 30 deg C
  - Application note of Pertie device to extend +5 deg C will be released
- Ambient light: 7,000 Lx or below
- There should be no water droplets on the surface of the measurement target.
- The scanner is not dust-proof nor water-proof, so be careful of dust and water droplets.

Contact:  
SEIKOWAVE K.K.  
TEL: +81-42-595-7041  
Email: sales@seikowave.jp

